



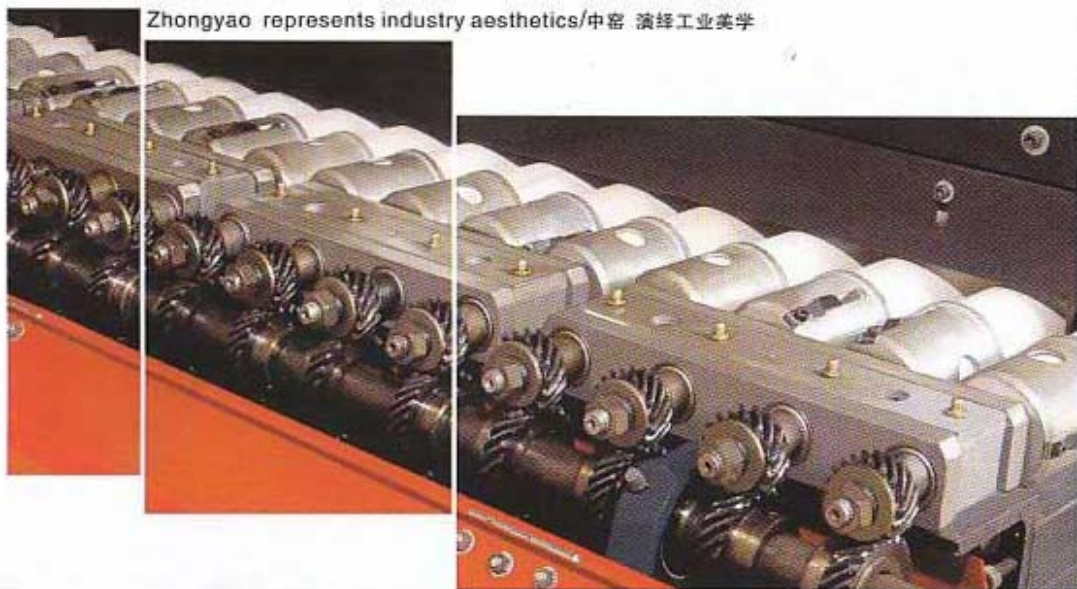
The driving system applies the mode of screw gear compulsive driving, each 2-3 kiln sections form one driving team, each team is equipped with one set of speed regulating motor, several speed regulating motors are equipped with one transducer for adjusting the speed. If there's kiln block, the rollers before the accident area can be adjusted as shuttle swaying, and the rollers behind the accident area can continuously deliver the embryos. The entire driving system boasts of simple and regular structure, balanced and reliable driving, easily adjusting and small repairing.



传动系统采用螺旋齿轮强制传动方式，每2-3窑段为一传动组，每组配一套调速电机，每若干个调速电机配一个变频器调节速度。当发生堵窑事故需处理时，事故区前的辊子可以调成往返摆动，事故区后的辊子可继续将砖还送至窑外。整个传动系统简捷、规整，传动平衡可靠、调整简单、维修量少。

- 01 Ceramic roller/瓷棒
- 02 Steel roller/钢棒
- 03 Cycloidal pin reductor/传动摆线针电动机
- 04 Shift gears/无级变速器
- 05 Gear/齿轮
- 06 Shaft/主轴
- 07 Bearing/轴承
- 08 Multiply/联座
- 09 Fastening elements/紧固件
- 10 Utility/辅助材料

Product 产品系列
Driving System/传动系统



Zhongyao represents industry aesthetics/中窑 演绎工业美学



Product

产品系列

Zhongyao represents industry aesthetics/中窑 演绎工业美学

Burning System and Temperature Control System

燃烧系统及温控系统



The temperature control in the hot-up area and the burnt area is divided into several temperature control teams, each control team controls one kiln case, the muffle walls and muffle plates are set in the kiln chamber between the key control teams, the distance between the muffle walls/plates and the rollers is adjustable. Each temperature control team is divided into two single loop temperature control units. Each unit composes of one temperature control meter, one electric actuator, fuel control valve, one thermocouple and 4-8 burners. The temperature system is a kind of system with small flow rate and multi burners. Several burners with same heat power are distributed in the kiln, thus achieving even temperature and making convenient for adjusting. Each burner can be equipped with fire controller according to the client's requirements.

- 01 Jet nozzle/烧嘴
- 02 Gas pipe(DN80)/气管道
- 03 General valve(DN80)/气体安全控制总阀
- 04 Pressure switch/压力开关
- 05 Safety valve(DN25)/安全排空阀
- 06 Flow meter(DN80)/流量计
- 07 Pressure reducing valve(DN80)/减压阀
- 08 Filter(DN80)/过滤器
- 09 Pressure/压力表
- 10 Ball valve/球阀

预

热带和烧成带的温度控制是按窑段分

为若干个温度控制组，每个组控制一个窑箱，在关键控制组之间的窑膛内设有辊道上下马弗墙、马弗板，它们与棍子的间距均可调。

每个温度控制组分为辊道上下两个单回路温度控制单元，每个单元由一块温度控制表、一个电动执行器和燃料控制阀、一支热点偶及4-8个烧嘴组成。本温度系统为小流量多烧嘴系统，全窑数个热功率大小相同的烧嘴分布在窑上，以达到窑内温度均匀和调节方便的目的。根据客户要求每个烧嘴可设置火焰控制器

Zhongyao belongs to China and world
中窑 / 中国的中窑 / 世界的中窑

Zhongyao represents industry
aesthetics
中窑 演绎工业美学



PRODUCT

产品系列

Smoke Extracting System

排烟系统





The roller kiln applies concentrated smoke extracting. The smoke flows to the hot-up area from the burnt area, the temperature of the smoke gradually reduces from the burnt area to the hot-up area, and the for-burnt embryo gradually rises the temperature for it travels in reversed direction of the smoke extracting. The concentrated smoke extracting in the head of the kiln has the advantages of effectively utilizing the heat of the smoke and reducing energy consumption

辊道窑采用窑头集中排烟，烟气由烧成带流向预热带，烟气的温度由烧成带至预热带逐渐降低，而待烧砖坯则与烟气逆向而行到逐渐升温之目的，窑头集中排烟有效的利用了烟气余热，降低了能耗



Indirect cooling area
间冷区



powerful cooling area
强冷区



The cooling area is divided into three parts --- fast cooling area, indirect cooling area and powerful cooling area. The air quantity in the fast cooling area is separately controlled by one or two automatic control adjusting valves. Before each fast cooling air pipe, there's ball valve for controlling the air quantity of the branches. The automatic control adjusting valve can automatically adjust the cool air quantity according to the quantity and temperature of the tiles, thus control the temperature in this section within the set temperature. The indirect cooling area applies the method of indirect cooling. The cooling air doesn't directly enter into the kiln. The strong wind is forced into the kiln at the strong cold area and timely exhausting the hot air after heat exchange, thus fast reducing the temperature of the prepared tiles. After the cooling air turning hot, it is exhausted in section by the fan. The quantity of the hot air in varied sections is adjustable, thus assuring the cooling speed. In addition, the exhausted hot air can be re-used

PRODUCT

产品系列

Cooling System

冷却系统

冷却带分为急冷区、间冷区和强冷区三个部分。急冷区风量由一至二个自控调节阀分开控制，每个急冷风管前均有球阀手动控制各分管风量的大小。自控调节阀可根据窑内砖量多少即温度高低自动调节冷却风量以使该段温度控制在设定的温度。间冷区采用间接冷却的方法，间接冷却不直接进入窑内。强冷区采用强制向窑内打入冷风，并使热交换后的热风及时送出，以使烧好的砖温度迅速降下来。冷却风变热后由抽热风机分段排除，可以调节不同段抽出的热风量大小，以保证冷却制度，排出的热风可回收利用



fast cooling area
急冷区

Zhongyao belongs to China and world
中窑 / 中国的中窑 / 世界的中窑

PRODUCT 产品系列



Zhongyao represents industry aesthetics
中窑 演绎工业美学



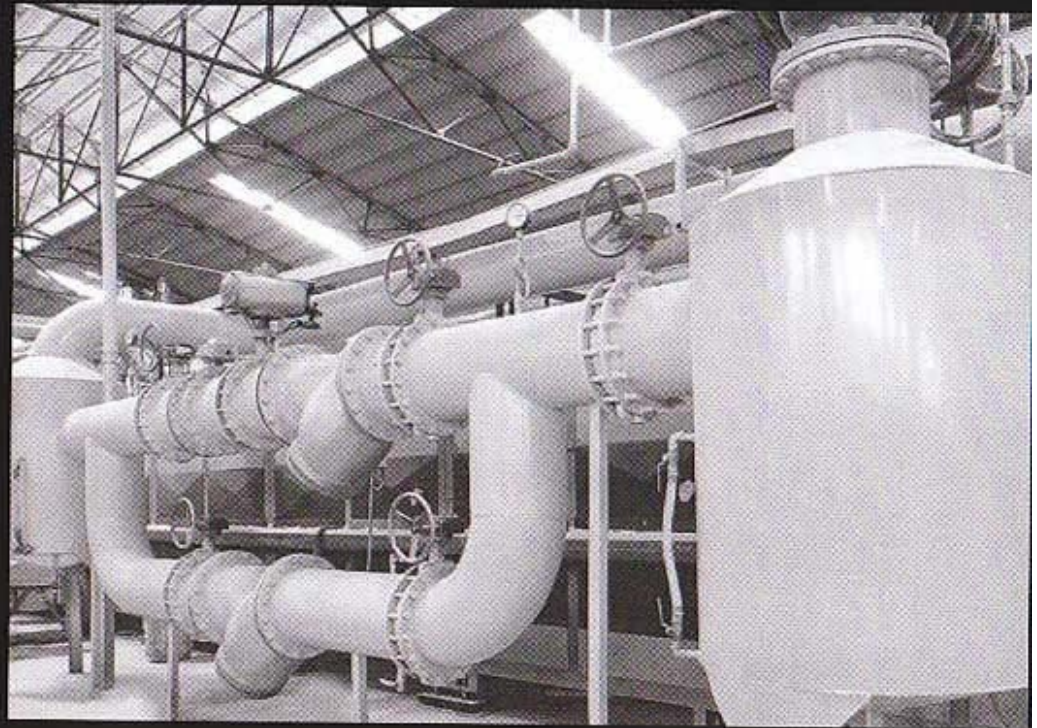
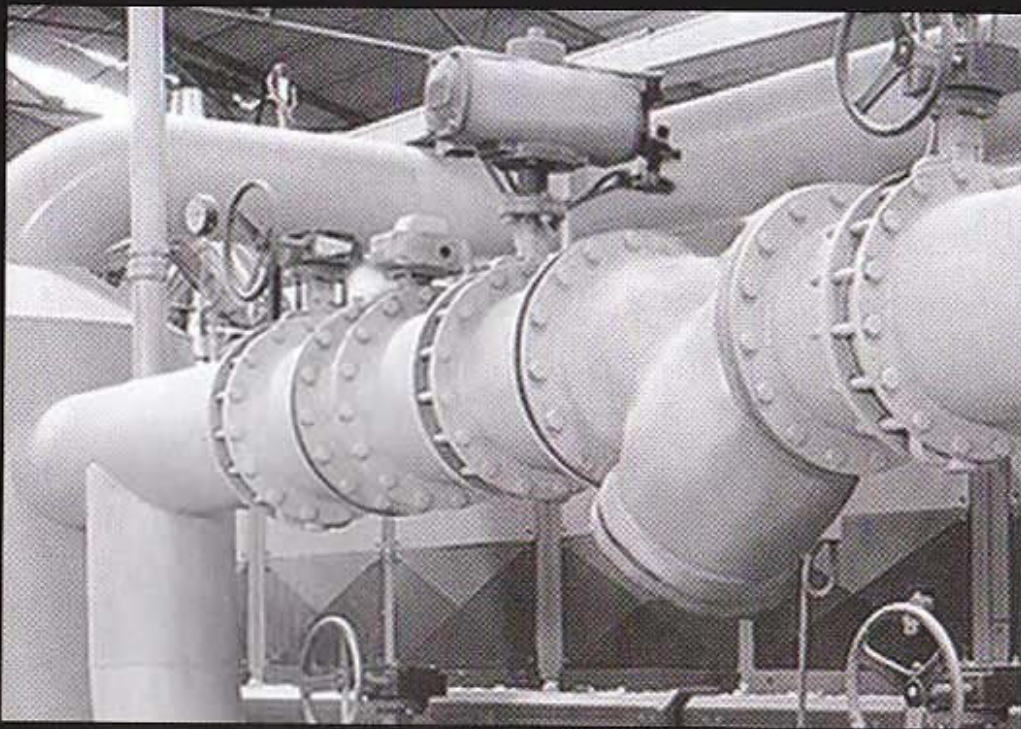
The Double Layers Dryer 双层干燥窑

In this dryer, the porcelain and ceramics product can be realized fast drying within a wide arrange, (up to the whole craft parameter condition, uniform and stability). Box type dryer compose of the dryer

该干燥窑可使陶瓷产品在很宽的范围内，（视整个工艺参数的均一性和条件的稳定性）实现快速干燥。该干燥窑由箱体式组成，组成一贯连接不断地提供合格干燥坯体的箱体

Wet-aspirator area/窑前排湿阶段
Heating and drying area/加热干燥阶段
Even speed drying area/等速干燥阶段
Low speed drying area/降速干燥阶段
Blance drying area/平衡干燥阶段





Alarm and Safety System 警报和保护系统



- Pressure switch alarm of the smoke fan/排烟风机压力开关警报装置
- Pressure switch alarm of the combustion fan/助燃风机压力开关警报装置
- Driving halt alarm/牵引停止警报装置
- Motors over-temperature switch off and alarm/电机过热断开警报装置
- Chimney fan and combustion fan are linked/排烟风机和助燃风机连锁
- Pressure survey and alarm system are linked/测压系统和警报系统连锁
- Power supply and fuel supply are linked/供电系统和供气系统连锁
- The roller kiln, load machine and unload machine are linked/窑炉和自动进窑机连锁
- The have two sets raster sensor for control the tiles overlapping in the kiln/窑炉加镭射电眼控制



OLIVANCE

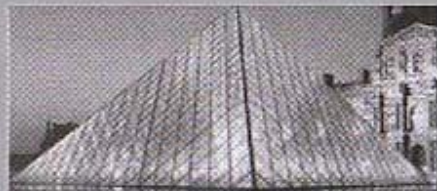
产品系列

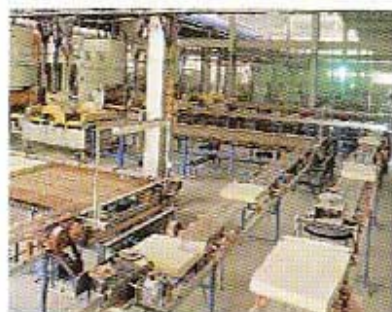
砌体结构部分
Brick structure



The adoption of the refractory material is based on the requirement of the kiln module which demands different temperature. The adoption of the refractory material with low thermal conductivity and small density reduces the energy consumption and ensures the working life of the kiln

辊道窑耐火保温材料的选用是根据窑炉不同段的温度要求选用不同温度级别的耐火材料。小比重低导热系数耐火材料的选用大大降低了窑炉能耗，保证了窑炉使用寿命





The connection line adopts 6 belt C type triangle takes to transport, reducing the green body in transport of breakage, increases the qualified rate of the body. Spread to move the electrical engineering adoption fixed-point factory house have speed stepless motor, having the adjustable scope wide, spread to move steady, break down the low advantage in rate

横向连接线采用6条C型三角带输送，减少了素坯在输送中的破损，提高了素坯的合格率。传动电机采用定点厂家的无级变速器，具有可调范围广、传动平稳、故障率低的优点

This equipments adopts advanced technology of the abroad with control procedure, which was made by Zhongyao kiln company, used for arranging the tiles orderliness and continues conducted into the pre-drying section
This equipments including: Six belt conveyer was driven by speed stepless motor on each line, being moved by electricity element control up and down, can be worked on the demand of given photo-call and be controlled the tiles alignment. The platform divide into three driving segments, adopting three speed stepless motor to drive roller via wheel gear



本设备采用国外的先进技术和控制程序，由中窑窑业发展有限公司制造，用于将砖坯排列整齐并连续导进窑前干燥段
本设备包括：每线各6条横向输送带，由无极变速电机带动，由电动元件控制升降，可按工作需要由光电元件控制坯体的排列。调速输坯台分3段传动，采用3台无极变速电机通过齿轮带动车轴

PRODUCT

产品系列

The connection line and table after press turn over machine
翻坯机出口横向连接线及连接辊台
Automatic enter table
进砖平台

Refractory Material 耐火材料



- 01 Mullite brick/莫来石
- 02 High temperature bond/高温粘结剂
- 03 Hi-al brick/轻质高铝保温砖
- 04 Hi-al insulation brick/低铁高铝
- 05 Spray gun brick/喷嘴砖
- 06 Insulation brick/轻质保温漂珠砖
- 07 Silicate fibre/普通硅酸铝板
- 08 Refractory cement/耐火泥
- 09 Asbestos board/岩棉板
- 10 Hi-al fabric hard board/超硬高铝纤维板
- 11 Hi-al blanket/高纯针刺毯
- 12 Hi-tem blanket/高温毯
- 13 Ceramic paper/赛那纸
- 14 Hi-tem scatter/高温散棉
- 15 Ack supporting/背衬板

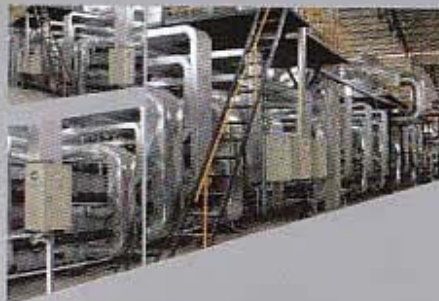
PRODUCT LINE

产品系列

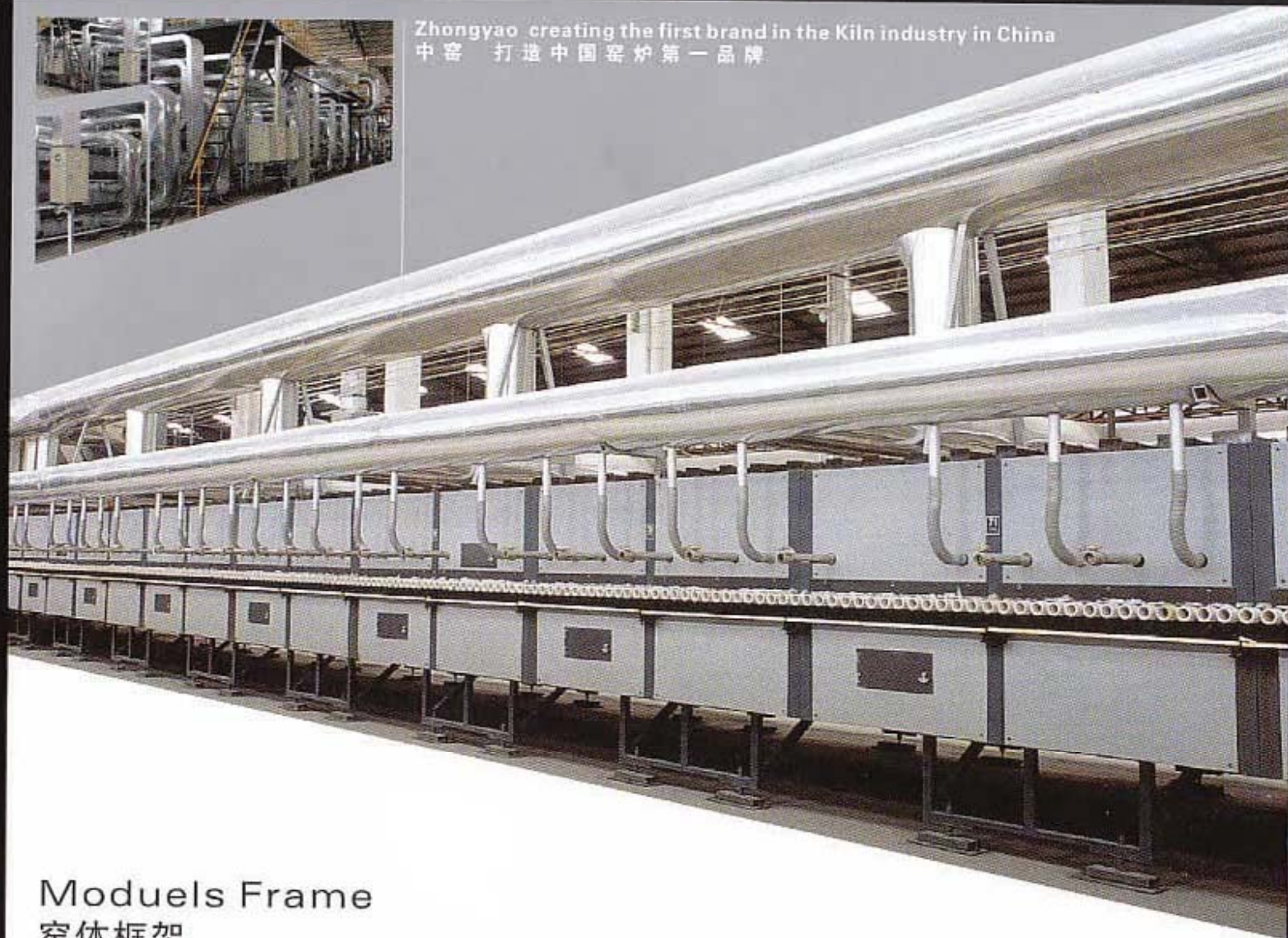


Controlling System 控制系统

- 01 Thermocouple WRP-130S/热电偶
- 02 Thermocouple WRP-230K/热电偶
- 03 Compensation conducting wire/补偿导线
- 04 Air switch/空气开关
- 05 Relay/接触器
- 06 Thermal relay/热继电器
- 07 Cable bridge/桥架
- 08 Cable/电缆
- 09 Controlling box/动力控制柜
- 10 Simulating panel/模拟屏
- 11 Alarm elements/报警仪
- 12 Temperature control instrument/温控表
- 13 Light-electricity switch/光电开关
- 14 Regulation/执行器
- 15 Inverter/变频器
- 16 PLC
- 17 Delay relay/延时继电器



Zhongyao creating the first brand in the Kiln industry in China
中窑 打造中国窑炉第一品牌



Moduels Frame 窑体框架

Zhongyao represents industry aesthetics
中窑 演绎工业美学

- 01 Extra section steel/异型钢板
- 02 Slot section steel/槽钢
- 03 Cool-rolling steel/冷钢板
- 04 Hot-rolling steel/热钢板
- 05 Round steel/圆钢
- 06 标准件
- 07 Stainless sheet/不锈钢板
- 08 Refractory steel/耐热钢
- 09 Expandable material/消耗材料
- 10 Utility material/辅助材料
- 11 Paint/油漆



Zhongyao creating the PRODUCT 产品系列



ZHONGYAO CERAMIC KILN

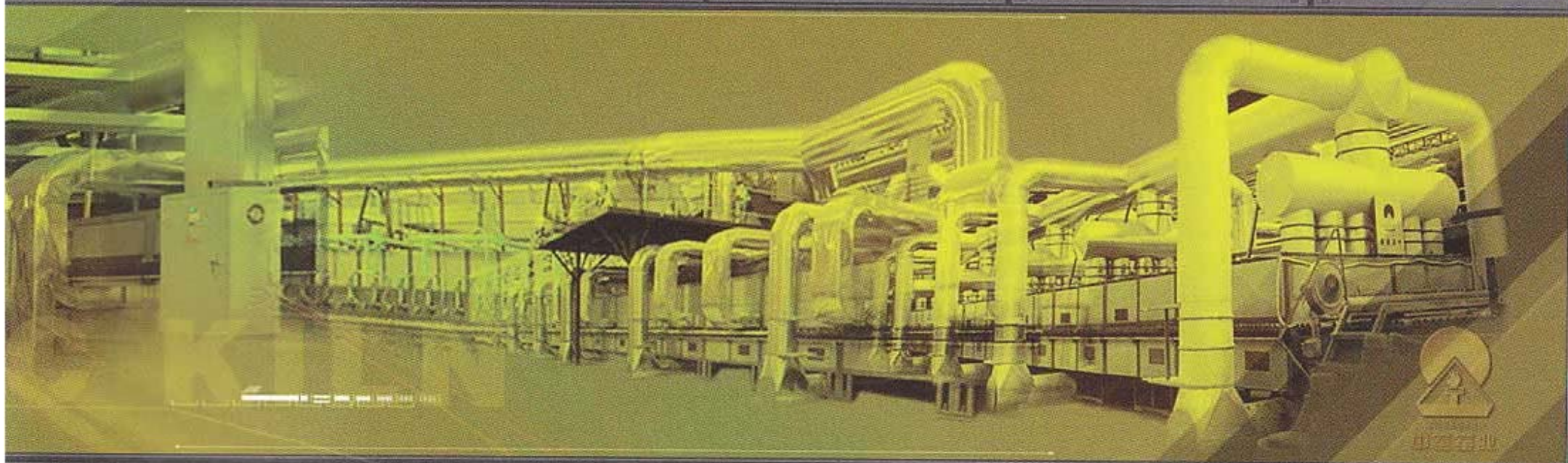
The Roller Kiln 辊道窑

The roller kiln is produced with imported technologies according to local situations, it is one of the advanced roller kiln in the world. The roller kiln is installed on the site by standard modules that prefabricated in our factory optionally, by means it is can be made more rigidly and faster, shorten the period of manufacturing. Our kilns are the first choice for ceramic manufacturers to expand the production ability and do technological rebuilding. The roller kiln uses a lot of type of fuel such as coal gas, diesel oil, or LPG etc

该辊道窑是引进国外先进的辊道窑技术，结合我国具体国情而优化设计制造的，是具有当代国际先进水准的标准辊道窑。标准辊道窑在制造上采用分段模数预制、现场组装的方法，从而保证了制造的精度，缩短了安装时间，使项目从立项到投产的周期大大的缩短，是现代窑炉的发展趋势，是陶瓷厂家实现现代化的扩大再生产和技术改造的首选窑炉。标准辊道窑使用煤气、天然气、轻柴油或LPG明焰烧成，既提高了产品的质量档次，又节约了能源

First brand in the kiln industry in China

中窑 打造中国窑炉第一品牌



Zhongyao represents industry aesthetics / 中窑 演绎工业美学



